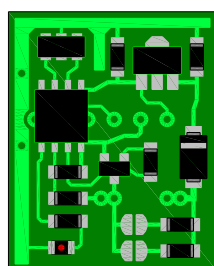
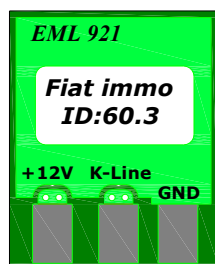


Fiat / Alfa Romeo immobilizer emulator EML921/603 installation guide

2014.10.20 edition 01



LED indicator

EML921/60.3 technical data:

Supply voltage: 10-15V (DC)
Data baud rate: 4800 kbps
Supported cars: All *Fiat, Alfa Romeo* cars with
black, yellow, grey and **blue** immo box

Wiring description:

[+12V] - power supply after ignition switch (*Terminal 15*)

[K-Line] - Data wire, connected to ECU .

[GND] - Ground.

[!] Emulator supply must be switched in the same time with engine ECU ignition supply.

LED indicator after ignition “on”:

LED still off	Incorrect connection, bad power supply of ECU, broken ECU, short immo line, connected immobilizer box (original immobilizer box must be disconnected)
LED go on and after few seconds goes out	Normal condition
LED go on and after few seconds start blinking	Incorrect ECU immobilizer code
LED go on and after few seconds blink three times and goes out	Recognized NEW ECU, code learning procedure completed.

Installation procedure:

1. Make ECU in NEW state (clear old immobilizer data in ECU memory (eeprom or MCU)). How to change data in ECU for most popular ECU's see dump examples below, also you can use software's like as "immo killer" and etc.
2. Connect emulator: **GND** – connect to ground, **+12V** – connect to ignition, **K-Line** – connect to ECU immobilizer wire.
3. Disconnect immobilizer box, or cut immobilizer wire between ECU and immo box.
4. Switch ignition “ON”, and wait few seconds while LED indicator go on and after few seconds blink fast three times (it's mean “correct learning procedure completed”).
5. Start engine and Enjoy!

Most popular dump examples how to made ECU in NEW state:

Fiat Ducato, Peugeot Boxer 2.0L Jtd, 2.8L Jtd Bosch ECU (2 connectors, eeprom 95080)

Immo line PIN 11

00000000	FFFF	FFFF	FFFF	FFFF	FFFF	FFFF	FFFF	FFFF
00000010	1817	3338	322E	3138	FFFF	FFFF	FFFF	FFFF	..382.18.....
00000020	FFFF	FFFF	FFFF	FFFF	FFFF	FFFF	FFFF	FFFF
00000030	FFFF	FFFF	FFFF	0050	015C	FFAA	3030	3030P.\..0000
00000040	3030	3030	3030	8141	02FF	FFFF	FFFF	FFFF	000000.A.....
00000050	FFFF	FF03	0701	2020	0000	0201	36A5	6F006.o.
00000060	13CA	A836	A56F	0013	CAA8	064D	0101	0001	...6.o....M...
00000070	4002	0086	0008	1ED5	2700	2D00	0129	D529	@.....'-.).)
00000080	0F4D	0101	0001	4002	0086	0008	41D5	2700	.M....@....A.'
00000090	3600	0C41	D529	4009	0204	0000	400B	0066	6..A.)@....@..f
000000A0	0001	04D5	2900	3200	0141	D529	1345	0202).2..A.)E..
000000B0	0001	4001	002D	0001	41D5	2900	2D00	0141	..@..-.A.)-.A
000000C0	D529	0E45	0101	0001	4001	002D	0001	41D5	..).E....@..-.A
000000D0	2900	2D00	0141	D529	314D	0404	0001	4003	..).-.A.)1M....@
000000E0	002F	0001	41D5	2900	2F00	0141	D529	294D	./..A.)./..A.)M
000000F0	0404	0001	409A	0038	000C	41D5	2900	3A00@..8..A.)..
00000100	0C41	D529	304D	0404	0001	4003	0038	000C	.A.)0M....@..8..
00000110	41D5	2900	3500	0141	D529	2E4D	0404	0001	A.)5..A.)M....
00000120	40AB	003B	000C	41D5	2900	2E00	0C41	D529	@...;.A.)....A.)
00000130	0720	0000	0000	0000	0000	0000	0000	0000
00000140	0000	0000	0000	FFFF	FFFF	FFFF	FFFF	FFFF
00000150	FFFF	FFFF	FFFF	FFFF	FFFF	FFFF	FFFF	FFFF
00000160	0000	CAFF	1027	F9FF	0000	C2FF	1027	F1FF'.....'
00000170	FFFF	FFFF	00FF	0009	0047	0100	0000	40FFG....@.
00000180	0000	FFFF	FFFF	FFFF	FFFF	FFFF	FFFF	0000
00000190	0000	0000	00FF	0000	0000	0000	0000	0000
000001A0	0000	0000	0000	0000	0000	00FF	AC0A	4100A.
000001B0	6200	0000	0000	0000	0000	0000	0000	2003	b.....
000001C0	0218	3032	3831	3031	3039	3331	01FF	00FF	..0281010931...
000001D0	0000	0000	0000	0000	0000	0000	0000	0000
000001E0	0000	0000	0000	0000	0000	0000	0000	0000
000001F0	0000	0000	0000	0000	0000	0000	0000	0000

Change data in eeprom like shown in example (yellow marked with black) adr.: 0x180h-0x18Fh

Alfa Romeo 2.4L Jtd, Bosch ECU (5 connectors, eeprom 24C04)

Immo line PIN 13, connector C (middle connector)

00000000	0000	0000	0000	0000	0000	0000	8103	04FF
00000010	55AA	55AA	5539	3731	2E30	3838	3937	312E	U.U.U971.088971.
00000020	3038	0510	3DD4	BD11	2078	3C00	8F00	FFFF	08..=... x<.....
00000030	0000	FFFF	FFFF	1999	1108	0000	0000	0000
00000040	0000	0000	0000	0000	6400	00FF	0020	2020d....
00000050	2020	2020	2020	20DA	0000	FFFF	3032	38310281
00000060	3030	3137	3837	FFFF	0031	4501	0100	0040	001787...1E...@
00000070	0100	5172	0001	FFFF	0051	7200	01FF	FFFF	..Qr.....Qr.....
00000080	FFFF	FFFF	FFFF	FFFF	FFFF	FFFF	FFFF	FFFF
00000090	FFFF	FFFF	FFFF	FFFF	FFFF	FFFF	FFFF	FFFF
000000A0	FFFF	FFFF	FFFF	FFFF	FFFF	FFFF	FFFF	FFFF
000000B0	FFFF	FFFF	FFFF	FFFF	FFFF	FFFF	FFFF	FFFF
000000C0	FFFF	FFFF	FFFF	FFFF	FFFF	FFFF	FFFF	FFFF
000000D0	FFFF	FFFF	FFFF	FFFF	FFFF	FFFF	FFFF	FFFF
000000E0	FFFF	FFFF	FFFF	FFFF	FFFF	FFFF	FFFF	FFFF
000000F0	FFFF	FFFF	FFFF	FFFF	FFFF	FFFF	FFFF	FFFF
00000100	FFFF	FFFF	FFFF	FFFF	FFFF	FFFF	FFFF	FFFF
00000110	FFFF	FFFF	FFFF	FFFF	FFFF	FFFF	FFFF	FFFF
00000120	FFFF	FFFF	FFFF	FFFF	FFFF	FFFF	FFFF	FFFF
00000130	FFFF	FFFF	FFFF	FFFF	FFFF	FFFF	FFFF	FFFF
00000140	FFFF	FFFF	FF31	0100	0000	0000	0000	00001.....
00000150	0000	0000	0000	0000	0000	00FF	0300	0000
00000160	FFFF	FFFF	FFFF	FFFF	FFFF	FFFF	FFFF	FFFF
00000170	FFFF	FFFF	FFFF	FFFF	FFFF	FFFF	FFFF	FFFF
00000180	FFFF	FFFF	FFFF	FFFF	FFFF	FFFF	FFFF	FFFF
00000190	FFFF	FFFF	FFFF	FFFF	FFFF	FFFF	FFFF	FFFF
000001A0	FFFF	FFFF	FFFF	FFFF	FFFF	FFFF	FFFF	FFFF
000001B0	FFFF	FFFF	FFFF	FFFF	FFFF	FFFF	FFFF	FFFF
000001C0	FFFF	FFFF	FFFF	FFFF	FFFF	FFFF	FFFF	FFFF
000001D0	FFFF	FFFF	FFFF	FFFF	FFFF	FFFF	FFFF	FFFF
000001E0	FFFF	FFFF	FFFF	FFFF	FFFF	0000	0000	0000
000001F0	0000	0000	0000	0000	00FF	78B0	78B0	78B0x.x.x.
00000200								

Change data in eeprom like shown in example (yellow marked with black) adr.: 0x1EAh-0x1F8h